

Two former Longview residents are turning heads in the art world

Chris Judy

Rising artist, football stand-out and 1993 Longview High School graduate Chris Judy was mentioned a few times this summer in D-Scene, the online gossip column of the monthly D Magazine.

The most important item concerned a painting he donated to Big Brothers/Big Sisters of North Texas.

At a high-profile fund-raiser, the piece sold for more money than any other work "including some very well-known Dallas artists," according to the Web site.

Another mention of Judy gave the lowdown on his romantic life. D-Scene can be

found at <http://dscene.dmagazine.com/home.html>.

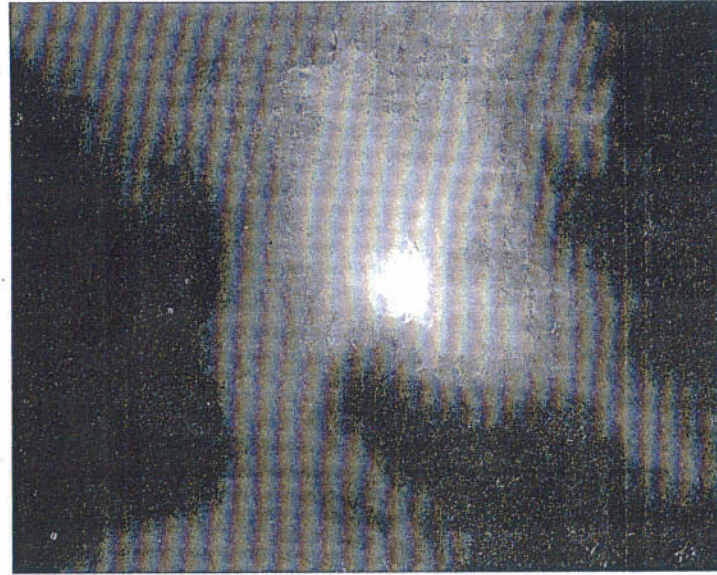
The abstract impressionist scrapped a full-time job as a financial adviser with UBS Financial Services in Dallas after 4½ years to pursue his dream of art. One of his first sales came when a customer at Primo's Restaurant in Uptown Dallas asked to buy a piece he had hung there. Soon upscale homeowners ranging from society types to professional athletes in the Highland Park neighborhood and other areas began to commission him, he said.

His works can be viewed in board rooms and corporate lobbies across the Metroplex, as well as locally in the office of Kelly Hall at the Longview Partnership, 410 N. Center, where his mom, Carole, is employed. Over 18 months he has sold about 40 pieces, Judy said.

"Because I am so right-brained and think creatively I am able to conceive an idea before I see it on the canvas," he said. Not only does this help him communicate his clients' wishes, it gave him an edge on the high school playing field as well, something his father, Steve Judy, a member of the TCU Athletic Hall of Fame, was particularly proud of as well.

"It's a creative sense, like reading the defense during a football game," Judy said.

His art can be viewed at www.chrisjudyart.com or call (214) 676-4701 to talk art.



Submitted Photo

Chris Judy's abstract impressionist piece is shown. Judy's work can be viewed in board rooms and corporate lobbies across the Metroplex, as well as locally in the office of Kelly Hall at the Longview Partnership.